

1.

1.1

(打入)

1.2

1.2.1 (KS)

KS B 0896
KS D 0213
KS F 2445
KS F 4303 PC
KS F 4306
KS F 4602
KS F 4603 H
KS F 7001

1.2.2 (1999)

08000 5

1.3

가

가

가

1.4

"10130 " .

1.4.1

가.

가

가

1.4.2

가.

1)

1.4.3

가.

1.4.4

가.

2

1)

2

2) (, H)

가

가

2

2

1.4.5

가. 2 1 .
.
.
.
.
.
.
.

1.4.6

(" 1. 1" , 2
1 .
가. , , , ,
.
.
. 1 ,
.

1.5

가. " "
1 ,
.
.

1.6 ,

1.6.1

가. KS F 7001 , PC KS F 4303,
KS F 4306
가 가 가 ,
2
12m 1/5 , 2
13m 1/5 ,
.

1.6.2

가.

, 60

1.7

가.

0

100mm

36

가

가

10m

2

2.1

2.1.1

가.

PC

(PC)

1) KS F 4303

2)

(mm)	(mm)	(m)
350	65	4 15
400	75	4 15

(PHC)

1) KS F 4306 A

2)

(mm)	(mm)	(m)
350	60	5 15
400	65	5 15
450	70	5 15
500	80	5 15
600	90	5 15

2.1.2

가.

KS F 4602

. H KS F 4603 .

2.2

가.

가

가

			(T)	(M)	(T.M)		(mm)
_350	PC	D25	2.5	2.1	5.25	H-5, 7	600
	PHC	D35	3.5	2.1	7.35	H-5, 7	700
_400	PC	D35	3.5	2.1	7.35	H-5, 7	700
	PHC	D45	4.5	2.1	9.45	H-5, 7	800
_450	PHC	D45	4.5	2.1	9.45	H-5, 7	800

3.

3.1

가.

가 7

KS F 7001

3.2

가.

50cm, 50cm

60cm

80cm

가

가

100cm

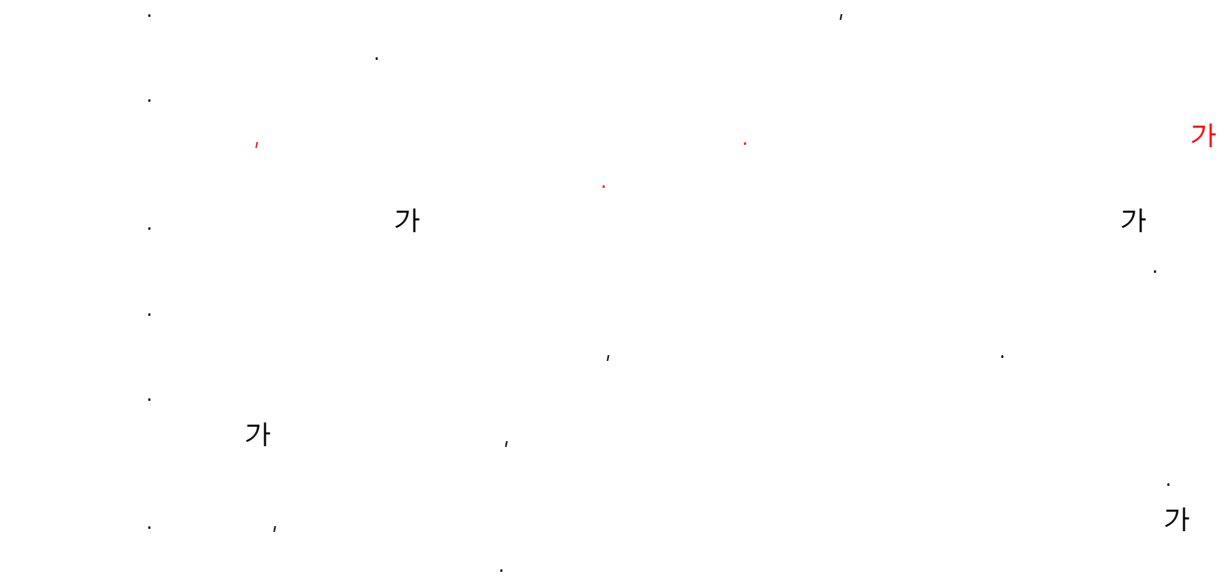
2

2 3m

가

"

가

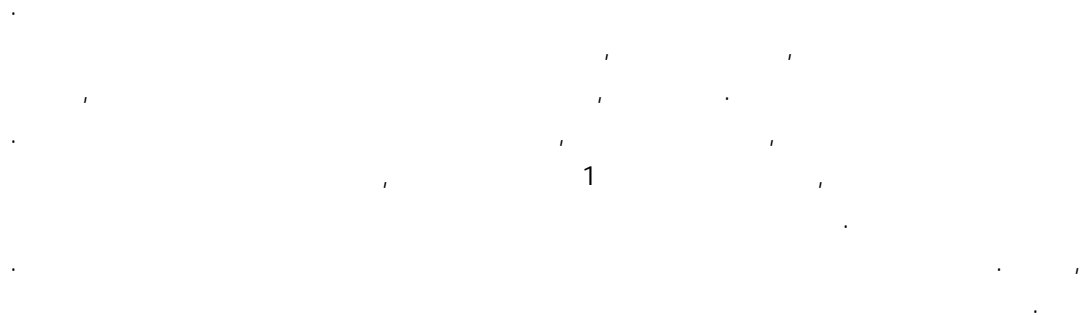


3.6

가.

가

- 1) : 10
- 2) : 15
- 3) : 20



	PC	PHC	
	2,000	3,000	3,000
1m	100	200	500
	8mm	5mm	2mm

3.7

가 15m

3.7.1

가.

- 1)
- 2) 2mm 가
- 3) " 2. 1"
- 4)
- 5) KS F 7001 , 7mm
- 1) 2mm
- 2) "
2. 2"
- 3)
- 4) 가 가
- 가
- 5) 3mm
- 6) KSF 4602 () KSF 4603 (H)

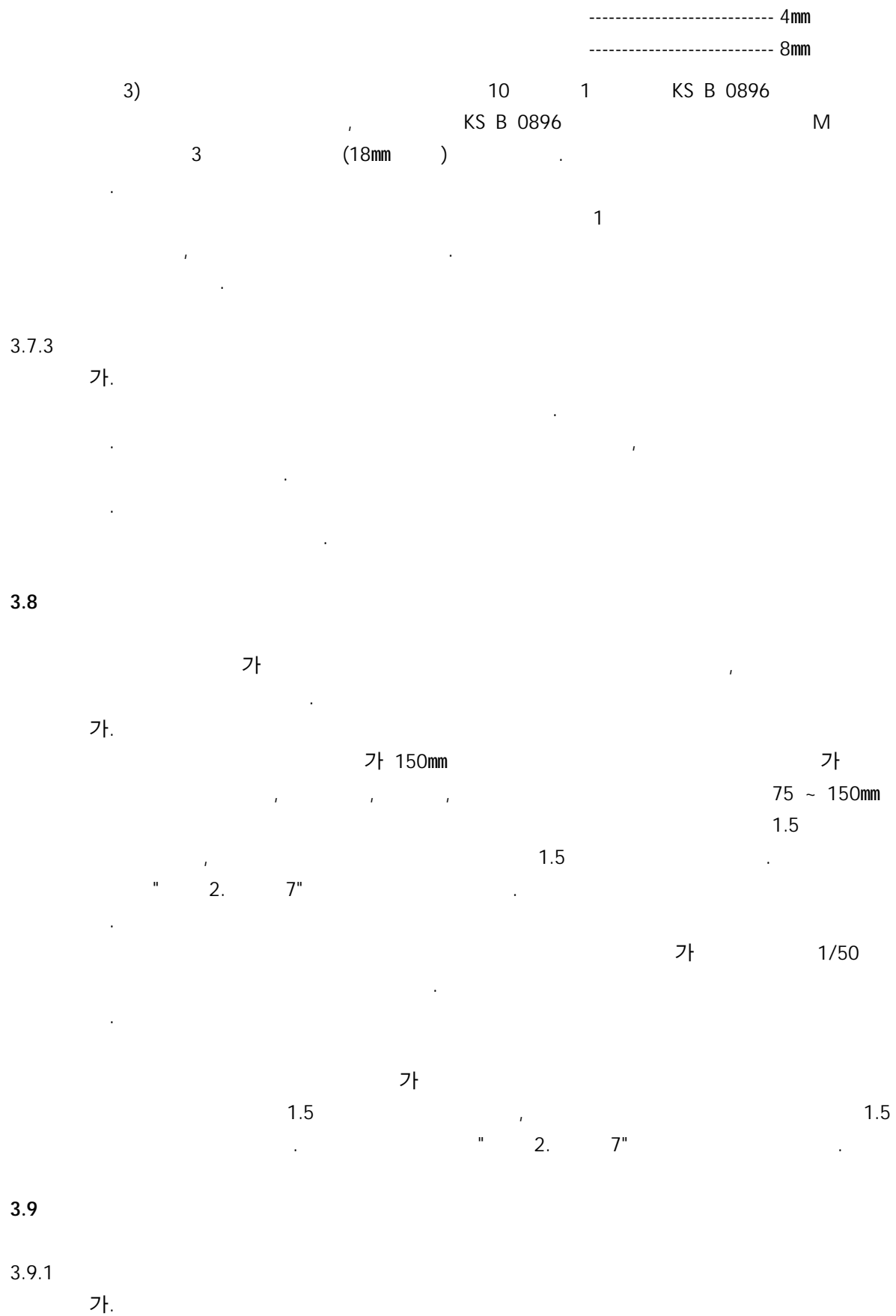
3.7.2

가.

- 1)

	Spatter
- 2) " " 8 5"
- " "

- 1) 가
- 2) 20 1 KS D 0213



" 2. 3"

- 1)
- 2)

- 3) 가 50 ,

- 4)

- 5) " 2. 4

3.9.2

가.

" 2.

5"

- 1)

- 2) (中空)

- 3) " 2.

3.10

3.10.1

가.

KS F 2445

$$2 \quad , \quad 2 \quad 2$$

, 2

1

1

2 1

가,

KS F 2445

1 1

1

250

250

3.10.2

가.

1

1

가

()

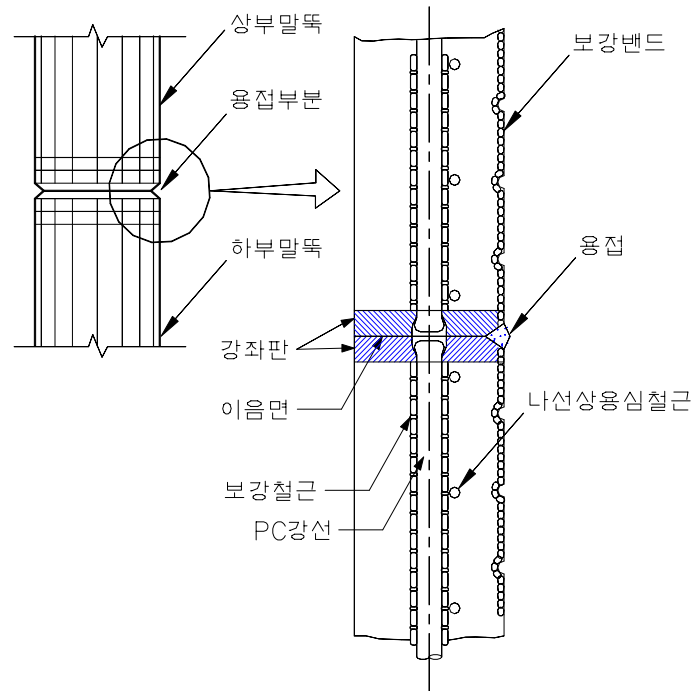
1.

():

KNHC / 2004

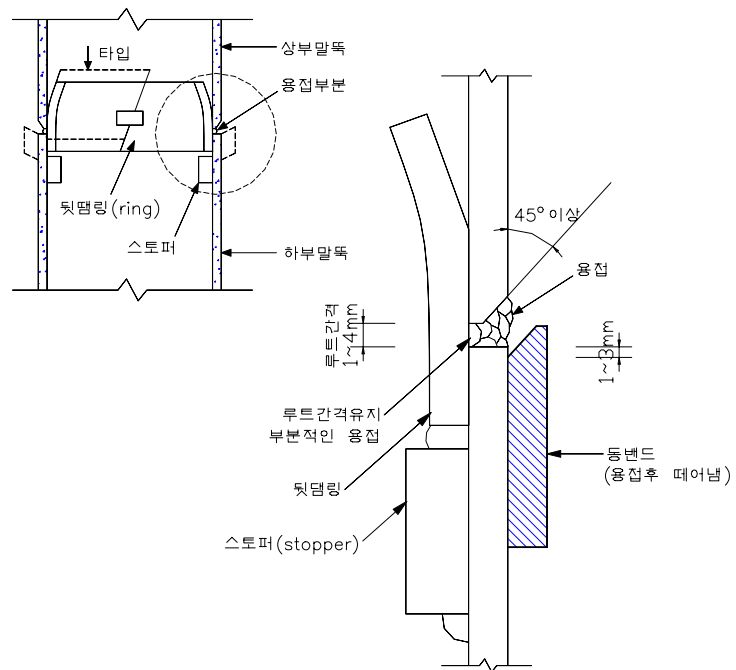
2.

1.

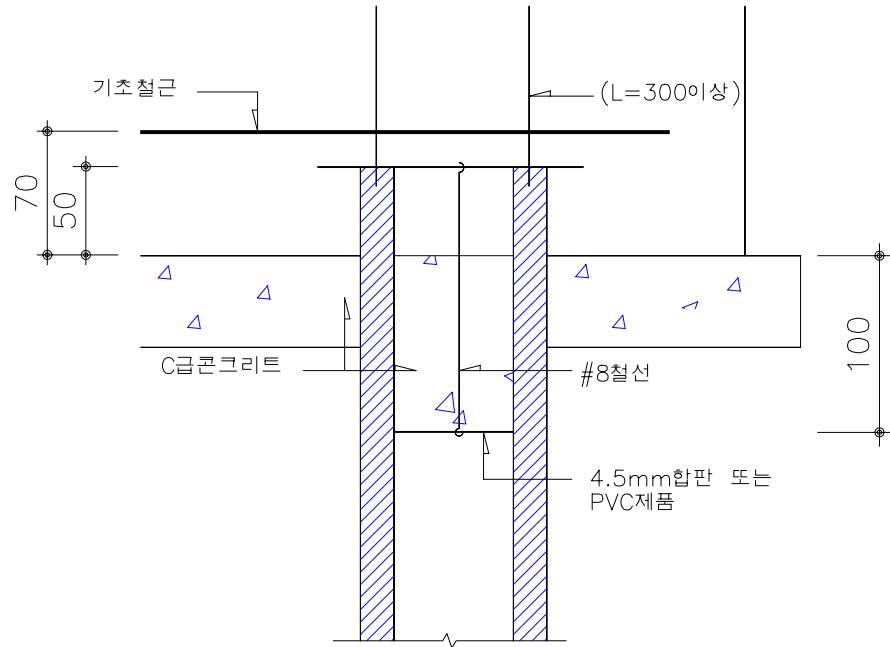


2.

(, H)



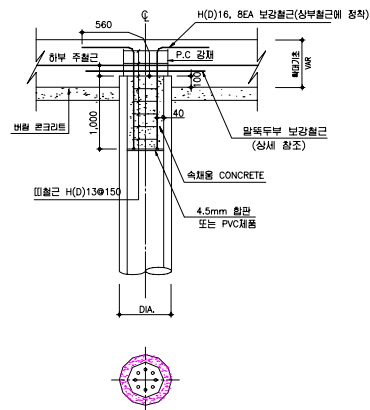
3.



4.

PHC -PILE 두부보강상세도

S=NONE



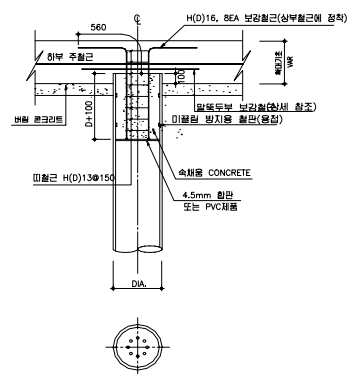
S=NONE



(, H)

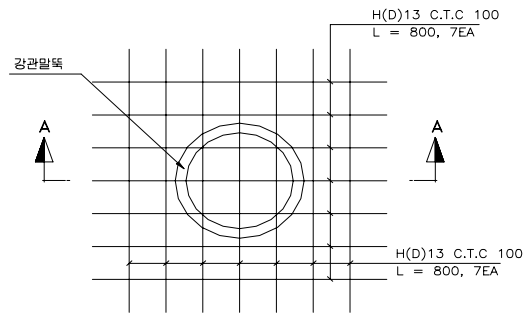


S=NONE



말뚝두부 보강철근 상세도

S=NONE



7.

" "

