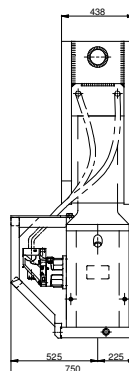
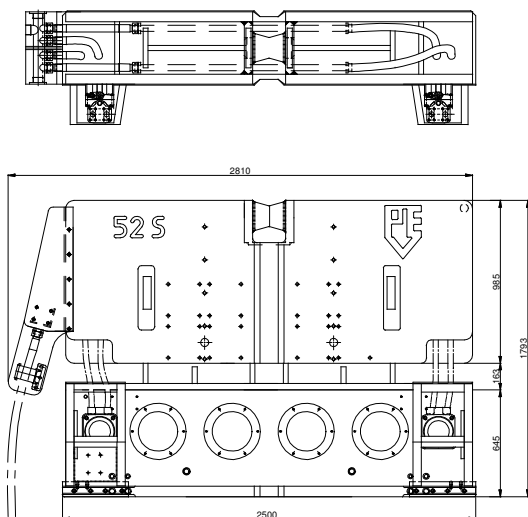


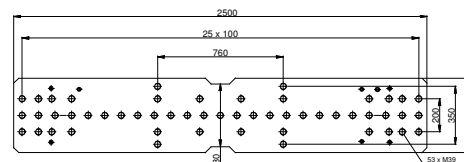


PVE Asia  
Piling & Vibro-Equipment

# PVE 52S With Power Unit Model 650S

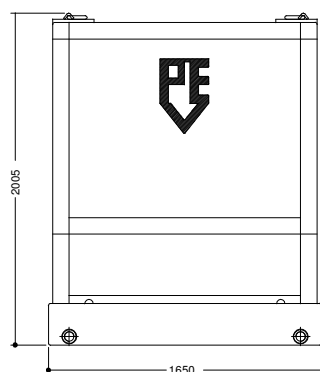
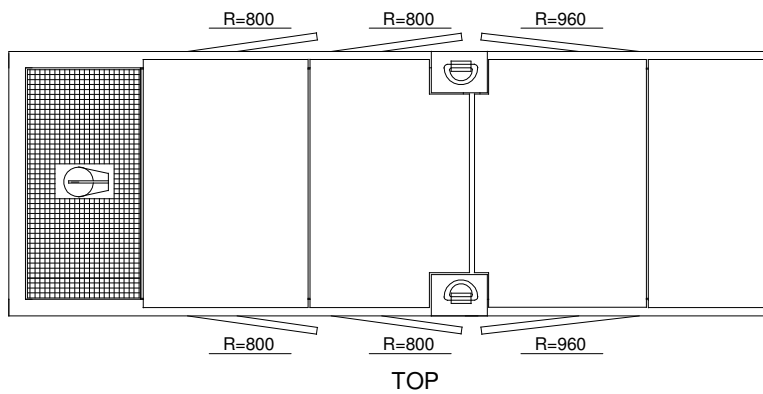


Technical details vibrator	
Eccentric moment	: 52 kgm
Frequency	: 1650 rpm
Centrifugal force	: 1500 kN
Max. Amplitude	: 20 mm
Max. line pull capacity	: 40 Ton (400kN)
Weight (without clamp)	: 6600 kg

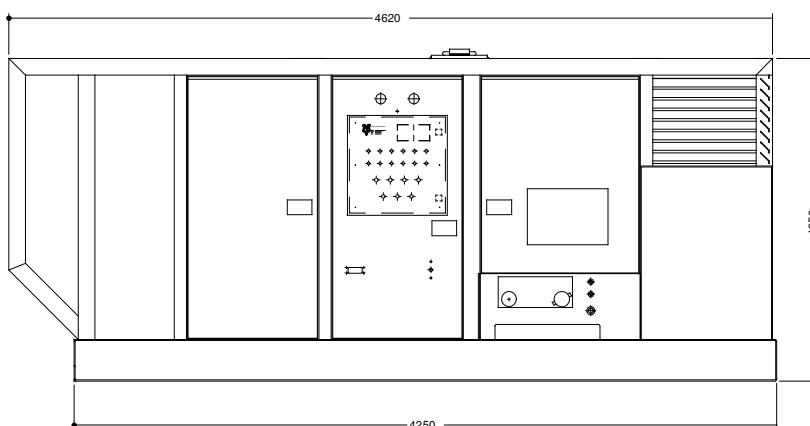


## Technical details power unit

Power unit	: Model 650S
Diesel engine	: Volvo Penta
Model	: TAD 1242 GE
Engine rating	: 430 kW / 585 HP
Max. Flow/min	: 635 ltr/min
Max. Working pressure	: 350 bar
Weight without diesel	: 6000 kg
Total max weight	: 6600 kg



FRONT



SIDE